



Your challenges our solutions

A holistic approach to
electronics manufacturing

L-Tek® Manufacturing



SMT & THT Production

The L-Tek company specialises in the development and manufacturing of electronics (EMS).

We offer production services for small and medium-sized series of prototypes, with quality and flexibility placed firmly in the foreground.

Since 1994, we have been providing customers with a comprehensive manufacturing solution:

- consulting
- PCB and other material procurement
- production – SMT soldering
- production – THT soldering
- conformal coating
- testing, programming
- box build packaging

All processes are performed in an **ESD** secured environment and in accordance with **IEC 61340-5-1 Ed. 2.0 (2016-05)** and **IPC-A-610-G** requirements.

**RoHS 3 & REACH
Compliant**



L-Tek provides the placement of various SMD components, with multiple bases for printed boards.

SMT:

- components measuring from 01005 to 50 x 50 x 31 mm
- BGA Ø =0,25 mm, min. pitch: 0,4 mm
Additional option: BGA Ø =0,2 mm, min. pitch: 0,3 mm
- PoP (package on package)
- Reflow soldering or Vapour Phase

TIV (PCB size):

- measuring from 60 x 60 mm to 450 x 510 mm
- Thickness of PCB: 0,2–4,5 mm

THT:

- Selective soldering with an ERSA machine
- Inert gas technology (Nitrogen)
- PCB size from 60 to 406 mm, with the length of up to 508 mm

**Completely
Automated
Production**



Control & Testing

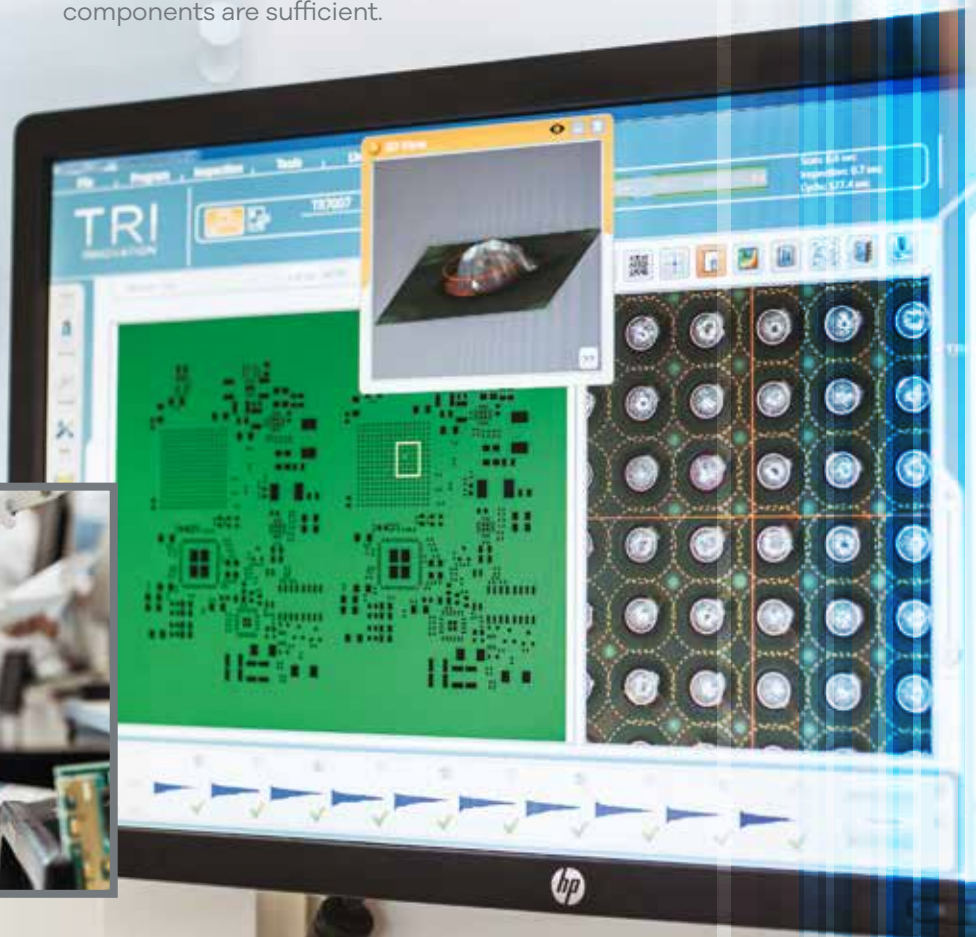
Focused on quality, we have set up various control points in our production.

Inspection

We guarantee the quality of our products by implementing component input controls, inspecting the first piece of a series, intermediate control and final control. We also perform automated optical inspection (AOI) which automatically checks if the position and solderability of the placed components are sufficient.

SPI – Solder Paste Inspection

With SPI inspection we are able to find anomalies in the solder print process, thus improving manufacturing quality.



AOI – Automatic Optical Inspection System

Automatic Optical Inspection is a key technique used to test electronics printed circuit boards. It enables fast and accurate inspection of electronics assemblies and ensures that the product quality leaving the production line is high and the boards are built correctly.

AOI detects solder ball presence, rotation errors and quality of solder joints.

Testing

At the customer's request, we can develop testing and programming devices for specific products or have them delivered by the customer himself. Products can already be tested during the production phase as semi-finished products or as end products in casing.

Multiple
Control Points



Medical EMS Production

L-Tek develops and manufactures products in accordance with **ISO 13485:2016 Class I** and **IIa** and **IIb** medical standards.

We provide comprehensive assistance in the manufacturing process, certification of medical products and manufacturing in accordance with the **ISO 13485:2016** and **MDR 2017/745**.

Full Material
Traceability



Quality and Certifications

L-Tek's standard is assessed annually

- **ISO 9001:2015**
- **ISO 13485:2016** Class I and Class IIa and Class IIb
- **IPC-A-610-G**

Production and other premises are ESD protected and inspected regularly. Manufacturing technologists regularly attend IPC seminars to disseminate knowledge and experience.

Quality is our
top priority.



L-TEK

**We are focused
on our customers.**

L-TEK[®]
Your challenges our solutions

L-Tek d.o.o., Obrtna cesta 18, 8310 Šentjernej - SLOVENIJA
■ t: +386 7 62 09 800 ■ f: +386 7 62 09 801 ■ info@l-tek.com



www.l-tek.com